

2005-



2004

.2015

.2015

. 72

(2010-2006)

•  
•  
•

2000

-2006)

(2010

2003

2005

2005

.. :

:

( ) ( ) ( )

( )



11.....  
19..... :  
19.....  
31..... :  
31.....  
41..... :  
41.....  
53..... :  
53.....  
63.....  
73.....  
83..... :  
83.....  
91..... :  
91.....  
98.....  
111.....



(1.)

6 /18517971/

2004 /17980/  
) %39.6 ( )  
. %3.6 ( 65 ) %56.6 ( 65 15

14381 14  
29 %50.18 2004 %49.82

8 2004 3.5  
4.4 3.4 2001

4

,2004

.2004

(1)

2000 ) 24.5 33  
 .( 2004

---

%97.9 %95.2 %98 %95.4 2004 1990  
 ( 15)  
 2002 82.9 2000 %81 1995 %78.1  
 . %81 2004  
 %60.9  
 .2004 62 1995  
 " ,  
 1995 68.1  
 .2004 72 2000 70.5  
 71.3 1995 69.5

.2004 72.5 2000  
 71.5 68.9 66.5  
 %27.6 ."  
 .2004  
 %72 . %9.2 ,%45.2  
 ) .%27.2  
 .%13.6 .(%26  
 .%12.3 2004  
 "  
 .1998  
 52951 2000  
 . 57228 2002 . 56309 2000 . 55389 1995  
 .2003  
 2000 1197.8 1995 1244.6 2000  
 .2003 1238 2002 1218.3  
 " ( 2010 – 2006)  
 " " "

“ ”

\_\_\_\_\_

2004

1990

.2015

14

2004

2010 – 2006

1990

.2004

\_\_\_\_\_

) 2004 (

) 1990

2015

2004

.2004

.(

2004

( )





1990

.2015

: . 5

-1990

.2015

: / / . 6

2015 / /

.2015

: . 7

100

2015-1990

.2020

: . 8

•  
•

2003

2004

•



:

1997

1997

1990

1

:(1)

-1

:

.1

.2

.( )

.3

( 1459 )

2004 %11.39 1997 %14.26

2004

/ /2004 . / 1

.2004-2003 1997-1996

1997 (1)

1990

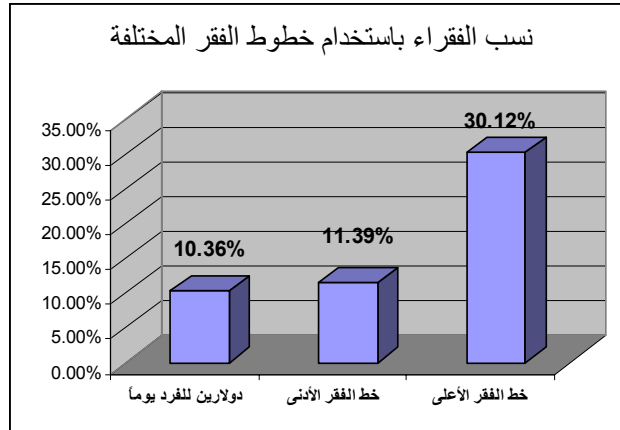
1997

2015

. %11.49

. %7.13

عام 2004



1997

:(1)

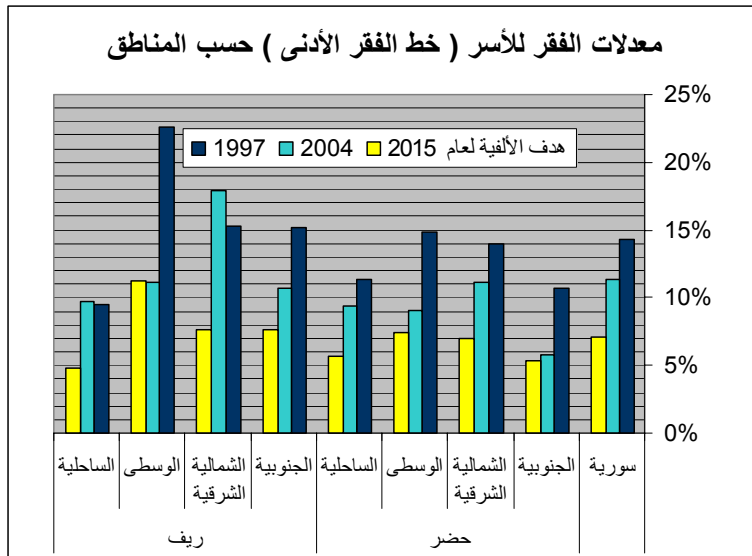
(%) 2015 2004

2004

2015	2004	2004	2004	1997	
5.26	3.73	8.47	4.74	10.51	
5.51	3.44	8.88	5.44	11.02	
9.69	6.58	15.6	9.02	19.37	
9.35	3.49	15.06	11.57	18.69	
5.75	2.32	9.26	6.94	11.49	
4.67	4.03-	7.52	11.55	9.34	
6.78	1.11	10.92	9.81	13.55	
8.97	5.43-	14.45	19.88	17.94	
8.14	4.48-	13.11	17.59	16.28	
4.56	2.65	7.35	4.7	9.12	
4.41	2.99-	7.1	10.09	8.81	
9.39	2.6-	15.12	17.72	18.77	

8.17	2.28-	13.15	15.43	16.33	
9.5	0.45	15.3	14.85	18.99	
7.13	0.1	11.49	11.39	14.26	

.2004



%38.3

%58.1

4

-2

.2004 %2.13 1997 %2.88

2004 0.37 1997 0.34

2004 1997

:(2)

(%)

2015	2004	2004		1997	
1.02	0.4	1.64	1.24	2.04	
1.08	1.02	1.73	0.71	2.15	
1.99	1.83	3.21	1.38	3.98	
2.14	1.29	3.44	2.15	4.27	
1.1	0.28	1.76	1.48	2.19	
0.87	0.89-	1.39	2.28	1.73	
1.21	0.25	1.94	1.69	2.41	
1.95	0.51-	3.14	3.65	3.9	
1.42	1.62-	2.29	3.91	2.84	
0.85	0.68	1.36	0.68	1.69	
0.88	0.3-	1.41	1.71	1.75	
1.82	1.24-	2.93	4.17	3.64	
1.46	0.87-	2.35	3.22	2.92	
2.14	0.45	3.45	3	4.28	
<b>1.44</b>	<b>0.19</b>	<b>2.32</b>	<b>2.13</b>	<b>2.88</b>	

:

.2004



2004 1997

:(3)

0.34	0.33	0.36	0.33	0.32	0.33	0.33	0.33	0.33	1997
0.37	0.33	0.35	0.36	0.39	0.33	0.38	0.31	0.37	2004

.2004

%18

9-7

%44.6

6-4

%34

:

-3

25

% 50

%

%3.02

%10

%20

%7.24

%10

%29.90

%20

%45.25

%10

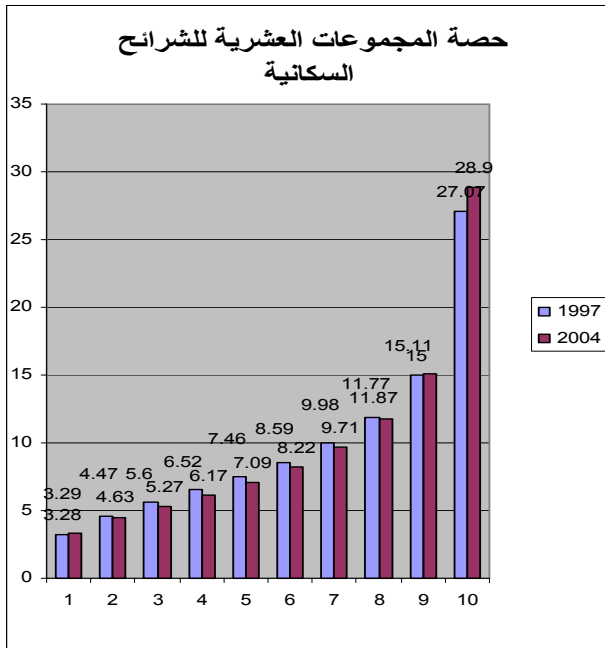
%.990

%10

%20

%.630

%20



(2004-2003 1997-1996)

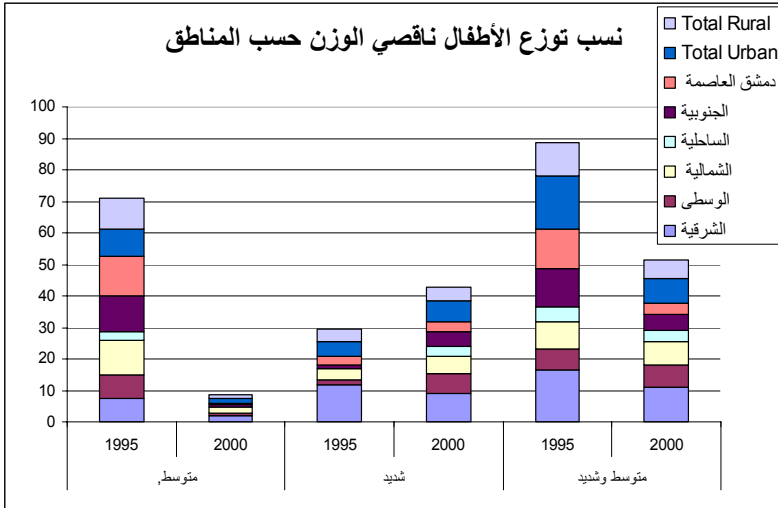
2004 1997

%.1.99

:2015 1990

-2

-4



2000 - 1995

(%70 )

)

(%57.5

.(%32 )

.(%75 )

.(%93)

(%96)

.2

-5

:3

.2004 1997

2100 )

)

(

2310

% 27.1

% 22.3

2004

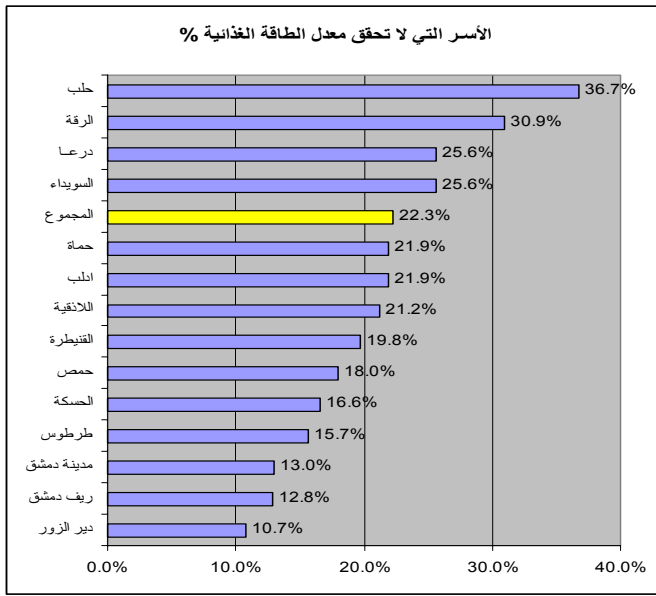
.%17.8

.2004

: 2

: 3

.2004



( )

%19 4

.%31

1995

( )

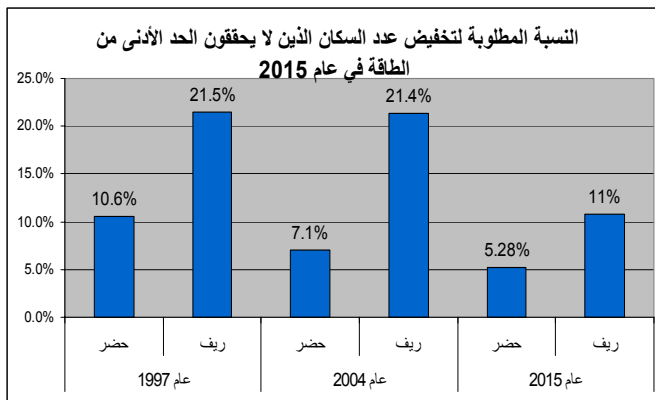
:(4)

2000

2000	1995	2000	1995	2000	1995	
11.1	16.4	9.1	11.9	2	7.4	
7.1	6.9	6.3	1.6	0.8	7.4	
7.1	8.3	5.3	3.4	1.8	10.9	
3.6	4.9	3.4	--	0.2	2.9	
5.1	12	4.5	1	0.8	11.5	
3.7	12.5	3.3	2.7	0.4	12.3	

2001 2000 1996 1995

:



%19 5

<sup>4</sup> دراسة ملامح الأمن الغذائي في منطقة البادية والمناطق المتدهورة / منظمة برنامج الأغذية العالمي / 2002/ 2002/ / 5

.%31

:

%0.9 1998-1996

%7.2

.1

.2002-1999

.2

2003

.%12

.3

.4

:

.1

.2

.3

.4

.1

.2

.3

.4

.5

.6

.7

.8

.9

:





1981 35

11 - 6

2002 32

:

.24-15

-6

( 11-6)

2004

%98

1990

%95.4

.2004

1990

2004

%97.9

% 2

11-6

(%93.2)

2004

.(%94.8)

(%93.4)

.%99

:(5)

(%) 2004 1990 24-15

2015	2004						1990			%
100	98.0	97.9	98.1	97.9	97.9	98.0	95.4	95.2	95.6	(11-6)
100	88.5	88.0	89.0	96.9	95.2	98.2	93.0	89.0	96.0	
100	92.5	90.2	94.6	94.7	94.1	95.6	88.0	86.6	90.1	(24-15)

2004

2004 1990

:

-7

%89

%96

1990

%93

%88

%89

%88.5

2004

%1

2004

%95.2

%98.2

%96.9

2004

2004 %100

(%82)

(%76)

.(%85)

2004

.%21.8  
(%7.5)  
(7.4)

:24-15

-8

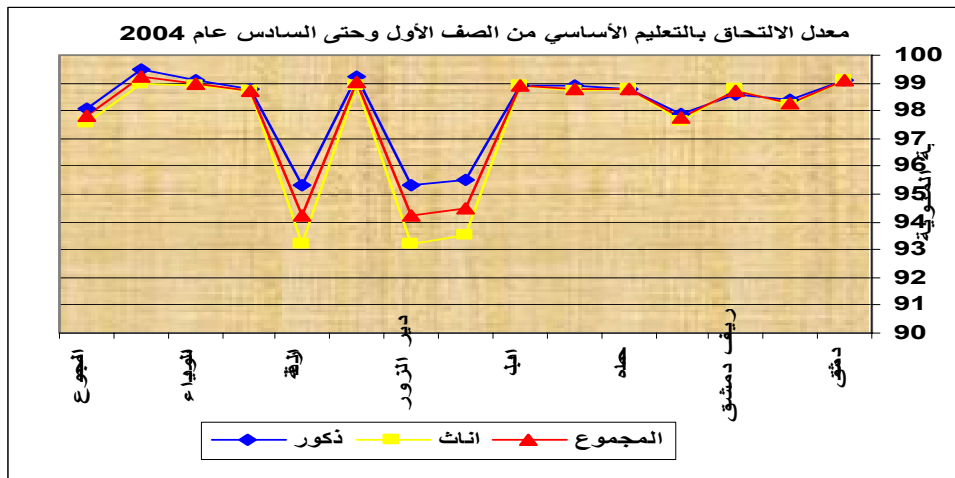
2004 %92.5 1990 %88  
. %2.2 94.7  
%3.9 %1

2004

(25-15)

2004

%70.2 %78.3  
%80.1 %85.5  
%99



الشكل البياني رقم (2)

11-6

:(6)

2004

24-15

99.0	98.9	99.2	99.3	99.4	99.3	
89.6	86.6	92.4	98.3	98.1	98.5	
97.7	97.4	98.0	98.9	99.0	98.9	
96.6	96.1	97.1	98.0	97.8	98.2	
95.8	94.7	96.9	98.9	98.9	98.9	
98.5	98.8	98.3	98.9	98.9	98.9	
95.1	93.4	96.6	99.0	<b>98.9</b>	99.1	
81.8	<b>75.6</b>	87.8	94.8	93.3	96.1	
<b>78.3</b>	70.2	86.2	94.4	<b>93.0</b>	95.8	
98.8	<b>98.9</b>	98.8	99.1	99.1	99.2	
<b>78.1</b>	71.2	85.0	94.2	92.5	95.8	
98.2	97.9	98.5	98.9	98.9	98.9	
98.8	98.6	98.9	99.1	99.1	99.2	
99.0	98.9	99.1	99.2	99.1	99.3	
92.5	90.2	94.6	97.9	97.6	98.2	

2004

:

:(7)

(%) 2004 1990

2004			2004			1990		
95.0	94	96	97.4	96.9	97.8	94	93	95
94.0	94	94	96.5	96.0	96.9	92	91	93
76.0	77	75	97.8	96.9	98.2	95	93	96
96.0	94	97	96.5	95.2	97.4	92	89	94
92.5	92	93	96.0	95.2	96.9	91	89	93
100.0	100	100	98.7	98.2	99.1	97	96	98
91.0	89	93	96.0	<b>95.2</b>	97.4	91	<b>89</b>	94

85.0	83	86	92.5	89.0	95.2	83	75	89	
90.0	91	88	89.9	86.4	92.1	77	69	82	
100.0	100	100	99.1	99.6	99.1	98	99	98	
82.0	81	83	89.4	86.4	92.1	76	69	82	
95.5	95	96	98.2	97.8	98.7	96	95	97	
99.5	99	100	93.8	89.4	98.7	86	76	97	
95.0	94	96	98.2	97.8	98.7	96	95	97	
88.5	88	89	96.9	95.2	98.2	93	89	96	

.2004 1990 :

:

.1

.2

:

•

:

•

:

•

.3

.4

.5

.6

.7

2002 32

:

.1

.2

.3

.4

:

.1

.2

.3

.4

.5

.6

.7

.8

.9

.10







⋮



:4

:2015

2005

:

.

.

.

.

.

:

.

.

.

:

-9

.2004 1990

(17-15)

2004

.%8

23-18)

2004 - 1990

2004

(%88.2) (%58) ( .(%82)

2004

2004

%3 (%87)

11-6

14-12

.(%7)

( 23-18)

2004 (%154.7)

.(%80.6)

.2004

: 24 -15

-10

2004 (%68.9)

(%23)

2004-1990

:(8)

(%)

17-15			17-15			14-12			11-6			
2004	2004	1990	2004	2004	1990	2004	2004	1990	2004	2004	1990	
64	91	80	118	102	105	96	98	95	95	98	95	
122	89	76	151	101	103	99	92	82	96	97	93	
73	79	52	82	94	87	87	83	61	89	92	81	
85	82	59	125	97	93	94	93	84	94	97	93	
82	76	46	106	93	84	90	88	72	93	97	92	
59	88	72	125	102	104	98	99	97	94	98	96	
49	83	61	78	84	64	69	74	40	87	85	66	
57	77	47	60	75	44	74	68	27	96	97	92	
96	84	64	85	84	63	77	81	56	88	92	81	
64	68	28	70	72	37	77	71	34	86	89	74	
100	88	73	131	96	90	95	96	90	95	97	94	
88	84	64	107	86	68	92	89	74	95	98	96	
78	87	70	122	101	103	95	100	100	94	98	95	
123	96	91	132	92	81	93	93	83	92	98	95	
85	87	70	104	96	91	88	92	82	92	95	88	

.1991 -1990

2004

:

( 23-18)

:(9)

(%) 2004

( 24-15)

2015	2004	2004	1990	
				-18
100	88	82	58	23
				-15
100	92	94	86	24

.2004

:

( 23-18) : (10)  
 (%) 2004 24 -15

94.2		94.2	99.2		99.2	
89.9	84.4	93.0	62.7	19.9	75.5	
96.7	93.5	98.6	108.0	101.2	110.7	
94.7	93.9	95.5	100.3	80.4	110.9	
93.5	93.4	93.5	79.4	73.4	86.0	
98.7	97.9	99.5	141.5	154.7	133.1	
91.1	89.8	94.3	52.3	40.7	73.6	
83.3	77.8	92.5	56.5	36.2	78.3	
79.6	68.9	92.4	47.1	8.2	70.9	
98.3	97.1	101.8	117.7	116.5	119.8	
84.0	76.9	94.1	35.9	17.8	46.9	
93.7	93.0	94.4	65.8	55.3	77.1	
100.4	97.6	107.3	118.1	106.1	141.1	
94.0	94.0		50.0	50.0		
91.9	88.3	95.0	88.2	74.1	96.0	

.2004 :

: -11

1993 .

.2004 %5.3 .%13.1

%4.4 2004-1993

%22.5

%.10

%.22.4 2004 %47.2 1993

%52.3

2004

.%37.2

.(%33.8)

2004

**15**

**:(11)**

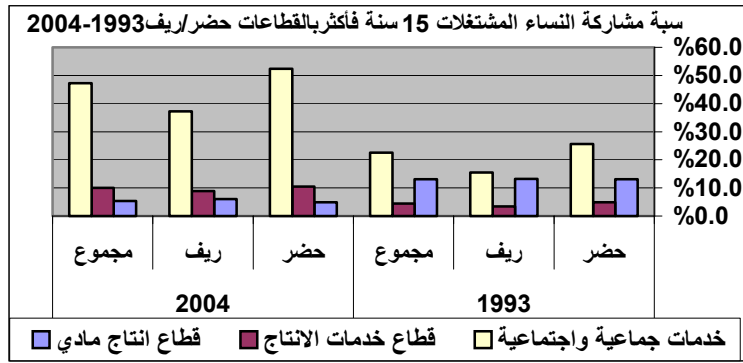
**(%) 2004 -1993**

2004			1993			
5.3	6.0	4.9	13.1	13.2	13.1	
10.0	8.9	10.5	4.4	3.4	4.9	
47.2	37.2	52.3	22.5	15.5	25.6	

1993

:

. 2004



-12

:

1994-1990

%9.6

250

30

%12

.2006

1990

2005

1990

30

.(

.(

)

)

27

7

2003

797

1999

189

1975

.2005



%20

%7

%7

:

.1

.2

.3

.4

:

.1

.2

.3

.4

%0.25

.5

.6

.7

1972

.8

:

.1

.2

.3

.4

.5

.6

.7

.8

.9

.10

.11

"

"





⋮



:(5)

**2015 – 1990**

:

( )

**2004 – 1993**

**:(12)**

( ) 2004 1993 (%)	2015	2004		1993	
83	13.72	18.44	27.40	41.15	
81	13.82	19.19	27.60	41.47	
81	13.98	19.41	28.00	41.94	
81	14.00	19.43	28.00	42.00	
81	13.75	19.10	27.60	41.26	
81	12.82	17.80	25.60	38.47	
81	14.08	19.56	28.20	42.25	
81	13.89	19.29	28.80	41.67	
81	14.10	19.58	28.20	42.30	
81	14.04	19.49	28.10	42.12	
81	14.33	19.90	28.70	42.99	
81	14.07	19.54	28.20	42.22	
81	14.33	19.90	28.70	42.99	
81	14.04	19.49	28.10	42.12	
<b>81</b>	<b>13.90</b>	<b>19.30</b>	<b>27.80</b>	<b>41.70</b>	

2004

1993

:

:

**-13**

19.30 1993

41.70

27.80

2004

.2004

2004

%81

2004 1993

.2015

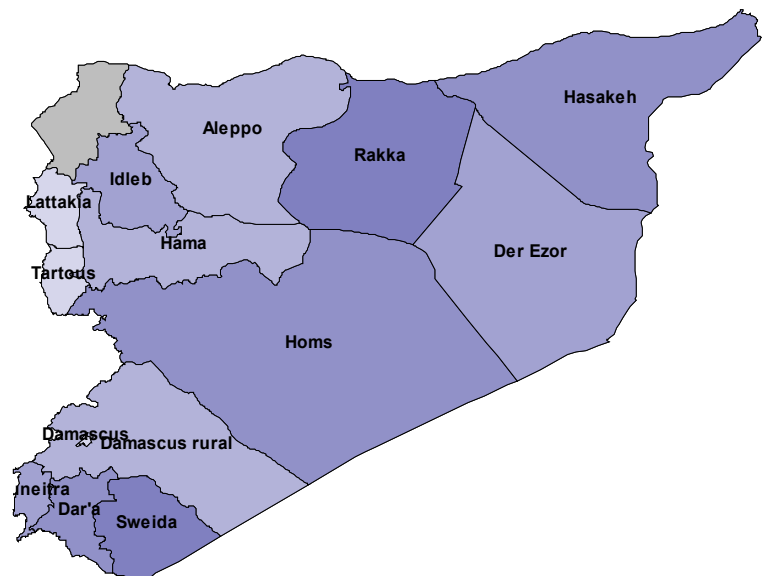
1993

.2004

%81

2004

.2015





17.8)

2004

2004

.( 18.44)

(

.( 19.9)

: -14

.2004

17.1 1993

34.6

23.1

2004

%76

2004 1993

**2004 - 1993**

**:(13)**

1993 (%)	2004	2015	2004		1993	
76		11.45	16.98	22.90	34.36	
76		11.84	17.56	23.70	35.53	
76		12.02	17.82	24.00	36.05	
76		12.67	18.78	25.30	38.01	
75		10.41	15.52	20.80	31.24	
76		11.43	16.95	22.90	34.30	
76		12.60	18.68	25.20	37.79	
76		11.99	17.78	24.00	35.98	
76		13.19	19.56	26.40	39.57	
76		11.76	17.44	23.50	35.29	
76		12.43	18.30	24.70	37.02	
75		12.80	19.17	25.60	38.39	
76		12.57	18.64	25.10	37.71	
76		12.93	19.17	25.90	38.79	
<b>76</b>		<b>11.53</b>	<b>17.10</b>	<b>23.10</b>	<b>34.6</b>	

2004

1993

:

2004

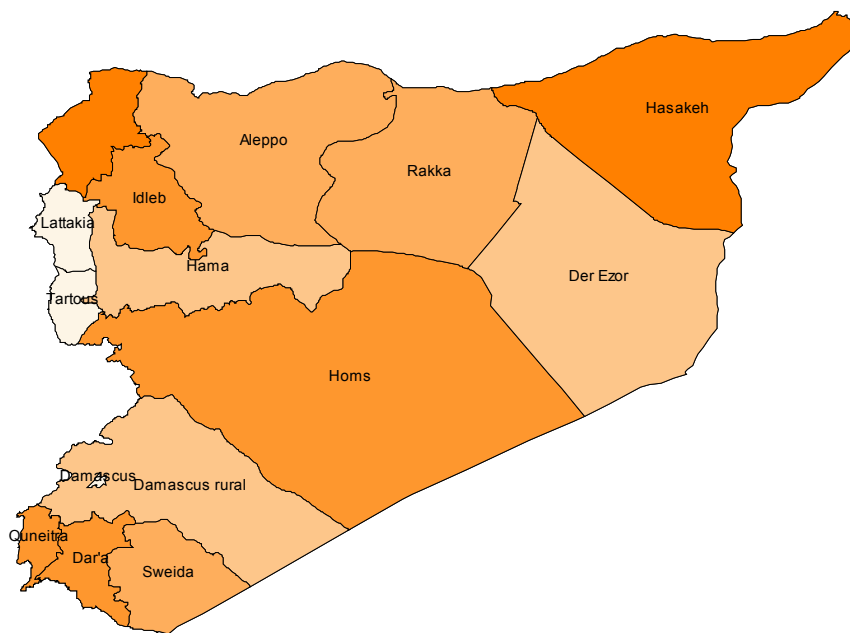
1993

.2004

%75

.2015

**2004**



( 15.52)

2004

.( 16.98)

( 16.95)

( 19.17)

( 19.56)

:

.1

.2

.3

.4

.5

.6

:

:

**- 1**

.1

.2

.3

.4

.5

.6

.7

.8

.9

:

**- 2**

.1

.2

.3

:

**-3**

.1

.2

.3

:

.2015

.1

.2

.3

.4

.5

.6

.7

.8

•

•

•

•

•

•

IMCI



:





2015-1990

3

:(6)

:

1994

:

-16

2004 58 1993 100000 107  
 1993 .66.90  
 %62 2004  
 .2015

( 100000 )

:(14)

1993 (%) 2015	2004	2015	2004		1993	
62		15.95	34.26	39.90	63.78	
62		33.80	72.62	84.60	135.21	
62		28.73	61.71	71.80	114.9	
62		28.52	61.27	71.30	114.08	
62		20.35	43.71	50.90	81.39	
62		16.91	36.33	42.30	67.64	
62		19.65	42.21	49.10	78.59	
62		21.02	45.15	52.50	84.06	
68		43.96	75.10	87.40	139.83	
62		30.50	65.62	76.20	121.99	
62		37.72	81.04	94.30	150.89	
61		30.41	65.55	76.20	122.04	
62		29.43	63.21	73.60	117.7	
62		26.37	56.65	66.00	105.48	

61	26.75	58.00	66.90	107	
----	-------	-------	-------	-----	--

2004

1993

:

(81.04)

% 17.6

.(65.55)

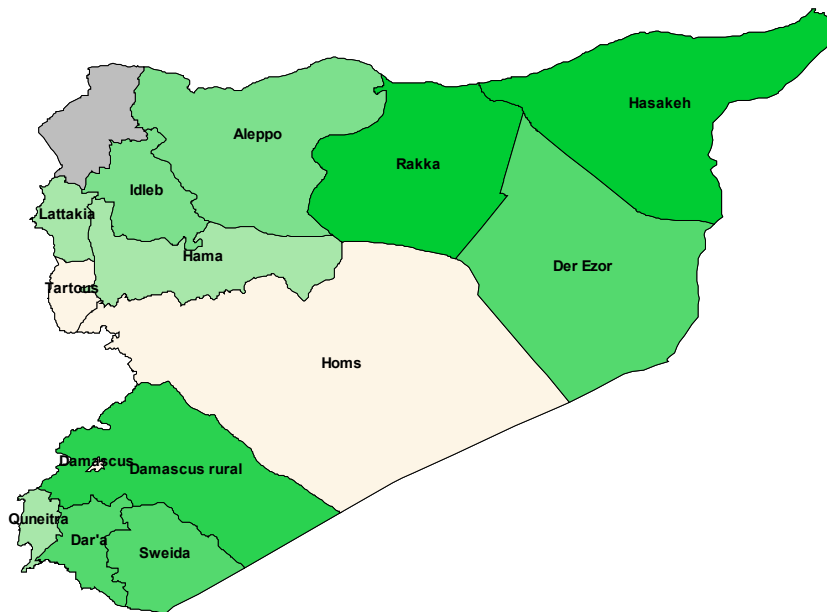
(65.62)

(72.62)

(75.10)

:

2004 ( 100000 )



-17

2004 . % 87.9 2001  
% 89.7  
( ) 2001 % 44.6  
% 8.3 % 73  
. % 50.8 . % 21.3  
. % 30.9  
:(15)  
(%)

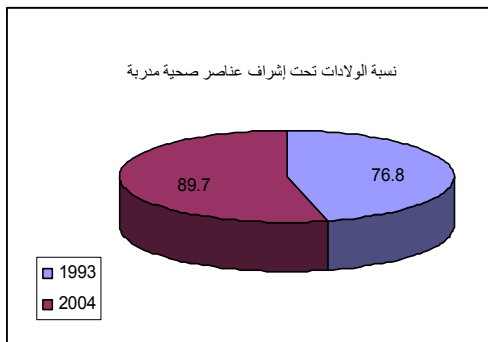
2004 1993 (%)2015	2015 ( )	2004		1993	
56	100	89.7	88.4	76.8	
48	60	49.5	50	39.9	

2004

1993

:

77

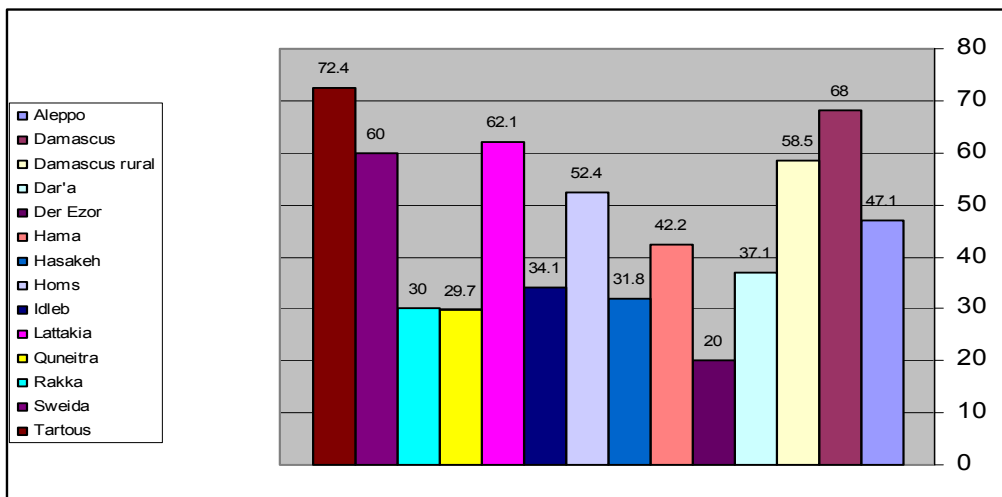


1066

35

2004

:  
% 35.1 (2001 ) %46.6  
. %49.5 2004  
%30.6



3.58

1995 – 1991

5.1

.2004

% 36 24 - 20

2001

24 - 20

% 21 19

:

.1

.2

.3

.4

.5

.6

.7

	.8
	.9
	:
	.1
.1994	.2
	.3
	.4
2005	
( )	
	.5
	.6
	.7
	:
	.1
	.2

.3

.4

.5

.6

.7

.8

.9

.10





:



:

:

-19

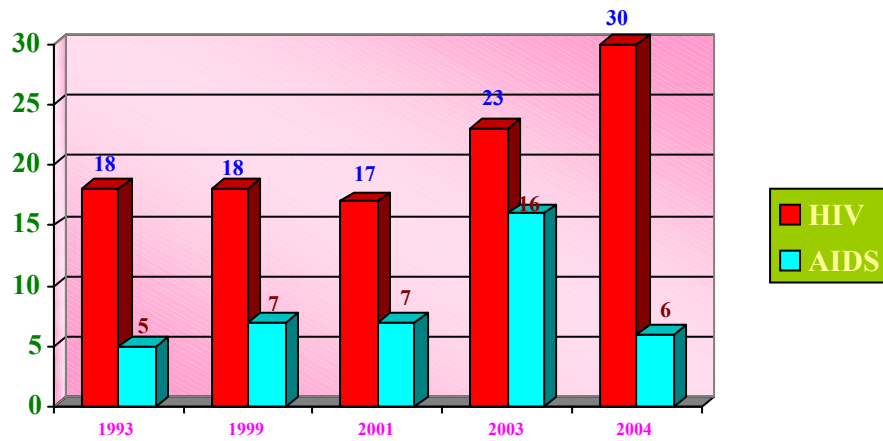
24      %50      39      %85

                 %77

                 %12.4

                 %4      %6.5

2004



:(16)

2004

20	6	14	15
39	13	26	24 - 15
138	28	110	49 - 24
10	2	8	50
<b>207</b>	<b>49</b>	<b>158</b>	

2004

:

(49-15)

%69 2002

%95.7

%54.1

%52.3

%92.5

%15.9

:

.1

.2

.3

.4

.5

.6

:

.1

.2

.3

.4

.5

.6

" .7

.8

.9

.10

.11

.12

.13

:

.1

.2

:

:

.1

.2

.3

.4

: 2010- 2006

.1

.2

.3

.4

•

•

•

•

•

.1

.2

.3

.4

.5

.6

.7

: \_\_\_\_\_ **(8)**

:

: **.1**

61

.2004

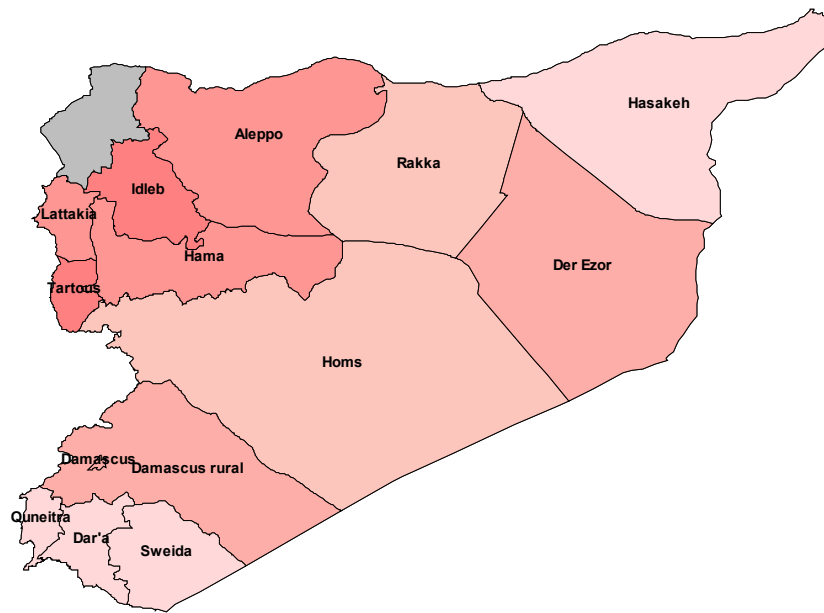
2001

12 2004

: **.2**

28880                      2003  
 :                      26878      2004  
 %54                      %3                      %20                      %22  
 (                      )

2004



:

.1

.2



:

.1

.2

.3

.4

.5

: .3

2004

18

100000

42

100000

:

.1

.2

.3

.4

.5

:

.1

.2

.3

.4

.5

.6

.7

.8

:

.1

.2

.3

.4

.5

.6

.7

:



:9

\_\_\_\_\_:

-25 :

2004 % 2.53 1995 %2.22  
2002-2000

2015 %3.86

1995

:(17)

.(%) 2004

1995 (%)2015	2004-	2015	2004		1995	
20		3.86	2.53	2.96	2.22	
-		-	1.02	-	0.14	

2004 - :

-26

:

0  
0.14  
19 2005 .2004 %1.2 1995 %  
35  
2015 %1.3

.  
:  
.1  
.2

:

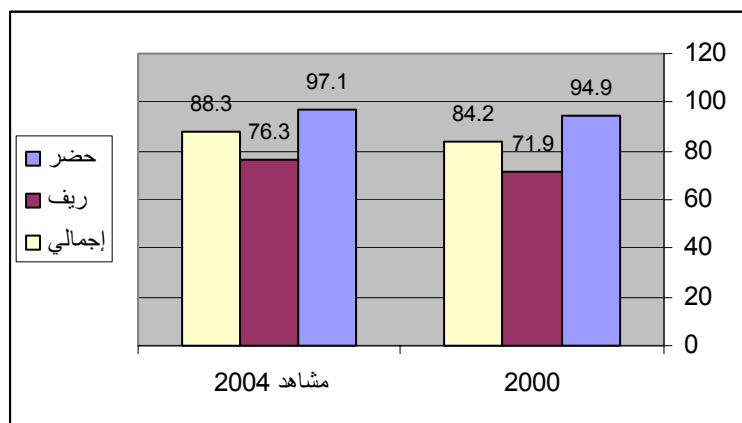
-10

---

**2015**

---

%71.9      2000      %84.2  
 97.1      %76.3    2004      %88.3      .      %94.9



:(18)

(%) 2004 2000

84.2	71.9	94.9	2000
85.8	75.7	95.6	2004
88.3	76.3	97.1	2004
92	86	97.5	2015
53	31	85	2000
			(%) 2004

.2004      2000      :

:

.1

.2

.3

.4

:

.1

.2

**-30**

%44.1 2004 2000

%94.5 %96.5

%45.3

0

:(19)

**(%) 2004 2000**

2004			2000			
73.8	45.3	94.5	71.8	44.1	96.5	
93.2	-	-	96.1	-	-	

.2004

2000

:

-31

%93.2 2000

%96.1

.2004



1997 60

2000 26

.

.2015

:

.1

.2

.3

.4

.( )

:

.2001

%3.5

•

/

•

:

.1

.2

.3

:

.1

.2

.3

.4

.5

.6

.7

.8

:



:

.( 24-15)

مراجعة التقدم المحرز:

24-15  
 %21      %11.5  
 %24.9      %36.7      %22      1995      %13.9  
 .2004

24-15      :(20)

(% ) 2004 1995

2004			1995			
10.3	24.4	7.6	5.5	11.7	4.6	
18.2	30.6	16.4	6.8	11.4	6.3	
18.9	25.7	17.7	8.9	19.9	6.4	
26.2	44.9	21.7	16.6	19.4	16.3	
32.6	41.4	29.8	7.7	12.8	5.0	
50.7	68.8	42.9	27.2	33.9	22.8	
23.1	25.2	22.7	19.2	17.8	20.3	

23.1	24.8	22.4	16.1	16.8	15.8	
41.4	42.2	41.1	17.6	15.4	19.1	
45.1	63.7	36.0	44.5	61.9	33.8	
16.4	17.2	16.1	8.6	3.3	10.1	
16.7	28.4	15.0	11.3	38.1	8.3	
36.1	64.4	27.5	25.3	0	30.3	
22.7	31.9	21.1	46.4	72.7	34	
24.9	36.7	22	13.9	21.0	11.5	

1995

:

.2004

2004

.1995

.1995

44.5 27.2

.( %22.7)

%45.1

%50.7

2004

2004

( 24-15)

:

2004-1994

%2.58

.1

%57.6

.2

2003

.3

	:	.4
		.5
	:	.6
		.7
2002	32	.8
		.9
		.10

	:	.1
		.2
		.3
		.4
		.5
		.6
		.7
		.8

):

:46

.(

:

.2004 57 1990 24  
1990 502  
.2004 4522

GTZ 2002 % 87 1970 % 7  
32 1020 .2003

7

10



:

.1

.2

.3

.4

:

.1

.2

.3

.4

.5

"

:18

:

1990 %4.39

:

---

.2004 %14.8

3.1

.2003

3.389

.%6

2002

1.185

.2004

1.8 2003

4

110000

---

2003 2002

.1

.2

.3

.4

.5

.6

.7

:

.1

.2

.3

.4

.5

:

.1

.2

.3

.4

.5

.6

.7







(2010 – 2006)

: .1

- 
- 
- 
- 
- 
- 
- 
- 

: .2

- 
- 
- 
- 

: .3

- 
- 
-

•  
•

:

.4

•  
•  
•

:

-5

•  
•  
•  
•  
•

:

.6

•  
•  
•  
•  
•  
•  
•



:

- 
- 
- 

.2015

:

1.25 .1

.%6

%8.7 %25 .2

30.4

.3

\$1500

.4

2.34

.5

100 43

17

15.7

.6

.7

.8

% 91.8

.% 80.4

.9

.10

.11

.12

:

.1

.

.

.2

.

.3

.

.4

.

.5

.

.6

.

.7

.

.8

.

: -

: .1

- 
- 
- 
- 

.2

.3

.4

: -

.1

.2

.3

.4

.5

.6

: -

.1

.2

: -  
.1

:

•  
•  
•

.2

: -

.1

.2

.3

:

-

.1

.2

.3

: -

.1

.	.	.2
	.	.3
.		.4
	.	.5
		.6
	.	
	.	.7
		-
		.1
.		
		.2
	.	







**2003**

**:(1)**

( % )	
27.2	
34.9	
37.5	
0.4	
100.0	

.2004

3/4

:

**2003**

**:(2)**

%	
26.2	
13.6	
11.2	
15.2	
5.9	
2.0	
25.9	
100.0	

2004

3/8

:

: (3)

( 2000 )

2003		2002		2000		1995		1990		
114	26	117	27	100	25	79	23	57	25	
98	27	99	28	100	30	77	28	49	26	
111	3	103	3	100	3	89	3	57	3	
116	15	106	15	100	15	117	21	75	20	
115	13	112	13	100	13	74	11	45	10	
108	3	103	3	100	4	87	4	53	3	
134	3	103	3	100	2	57	2	43	2	
129	10	110	9	100	8	81	8	72	11	
139	0	127	0	100	0	56	0	37	0	
111	100	108	100	100	100	84	100	56	100	

.2004 16/11 16/10 :

2000 :(4)

2003	2002	2001	2000	1995	1990	1980	1970	
57228	57121	56141	55389	52951	42138	51776	28454	

.2004 16/21 :

(%)

:(5)

14	10	17	17	
16	11	11	11	
5	10	10	10	
9	9	6	6	
13	17	9	9	
14	9	9	9	
12	12	12	12	
7	7	7	7	
11	11	11	11	
7	7	7	7	
13	13	13	13	
17				
10	10	10	10	
31	15	8	8	
12	10.4	9.6	9.6	

.2004 :

23-12

:(6)

2001	1999	1993	
98.5	95.5	95	
97.2	90.7	99.3	
94.2	90	91.9	

90.1	84.8	82.3	
96.4	87.3	99.3	
95.2	86.9	91.9	
91.3	80.5	82.3	
90.3	85.3	83.5	
82.4		73.3	

(%)

**2002**

:(7)

% 98	% 98	% 99	% 100	2003
% 98	% 98	% 99	% 100	2004

.2004 2003

:

**2004**

:(8)

(%)	
68.0	
58.5	
52.4	
42.2	
72.4	
62.1	
34.1	
47.1	
30.0	
20.4	
31.8	
60.0	
37.1	
29.7	

49.5	
------	--

2004 :  
**2004 – 1987** : (9)  
**2004**

2004	2004 – 1987							
1382	183	25	6	17	183	46	39	
964	-	-	-	-	-	-	-	
60	-	-	-	-	-	-	-	
21	8	-	-	1	8	2	4	
19	8	-	1	-	8	3	4	
260	24	2	2	4	24	9	4	
1688	6	2	-	-	6	1	2	
2377	15	1	3	2	15	7	1	
11471	9	-	-	-	9	4	5	
3132	54	14	2	12	54	10	14	
4026	4	1	-	1	4	2	-	
60	6	-	2	-	6	2	1	
206	6	-	1	1	6	-	1	
1138	7	-	1	-	7	2	1	
<b>26814</b>	<b>330</b>	<b>45</b>	<b>18</b>	<b>38</b>	<b>330</b>	<b>88</b>	<b>76</b>	

.2004 2003 :

(10)

2015	2010	2004	1995	
-	-	1	42	
-	-	12	65	
5000	10000	26878	17109	

.2004 1995 :

**2004 -1994** **:(11)**

1654	2248	50	1175	5127	1994
1574	1507	28	1295	4404	1995
1793	1767	117	1523	5200	1996
1875	1617	78	1402	4972	1997
2017	1618	89	1593	5317	1998
2149	1594	125	1556	5421	1999
1989	1371	264	1563	5187	2000
2092	1316	230	1507	5145	2001
2003	1234	230	1447	4914	2002
2173	1026	222	1545	4966	2003
2125	819	203	1561	4708	2004

.

:(12)

**(%) 2004**

100	2	98	100	1.4	98.6	100	1.1	98.9	
100	6.2	93.8	100	4.6	95.4	100	3.8	96.2	
			100	62.1	37.9	100	49.1	50.9	
			100	23.2	76.8	100	18.4	81.6	
100	7.2	92.8	100	3.4	96.6	100	5.9	94.1	
			100	14.3	85.7	100	11.1	88.9	

			100	6.9	93.1	100	7.6	92.4		
100	3.9	96.1	100	3.2	96.8	100	2.5	97.5		
			100	33.2	66.8	100	19.7	80.3		
			100	16.3	83.7	100	10	90		
100	5.9	94.1	100	5.7	94.3	100	1.3	98.7		
			100	49.7	50.3	100	14.1	85.9		
			100	32.2	67.8	100	9	91		
100	3.9	96.1	100	3.7	96.3	100	0.8	99.2		
			100	37.7	62.3	100	19.4	80.6		
			100	19.6	80.4	100	9.5	90.5		
100	5.3	94.7	100	4.8	95.2	100	2.4	97.6		
			100	51.8	48.2	100	18.1	81.9		
			100	37.2	62.8	100	13.2	86.8		
100	9.1	90.9	100	7.6	92.4	100	3	97		
			100	75.6	24.4	100	54.2	45.8		
			100	49.4	50.6	100	34.4	65.6		
100	25.9	74.1	100	25.7	74.3	100	4.2	95.8		
			100	85.4	14.6	100	19.5	80.5		
			100	56.5	43.5	100	12.1	87.9		
100	7.9	92.1	100	7.8	92.2	100	1.2	98.8		
			100	54.8	45.2	100	12.1	87.9		
			100	40 5.	59.5	100	8.8	91.2		
100	18.3	81.7	100	18.3	81.7	100	0.8	99.2		
			100	86.1	13.9	100	17.1	82.9		
			100	59.3	40.7	100	10.6	89.4		
100	12.6	87.4	100	12.3	87.7	100	1.4	98.6		
			100	74.3	25.7	100	2	98		
			100	44.8	55.2	100	1.7	98.3		
100	21.1	78.9	100	20.9	79.1	100	1.5	98.5		
			100	78.5	21.5	100	4.5	95.5		
			100	58.8	41.2	100	3.5	96.5		
-	-	-	100	43.3	56.7	100	1.9	98.1		
			100	43.3	56.7	100	1.9	98.1		
100	6.8	93.2	100	5.5	94.5	100	2.9	97.1		

			100	54.7	45.3	100	23.7	76.3	
			100	26.2	73.8	100	11.7	88.3	

.2004

:

:(13)

		2004	2001	
	120	-	245	TSP( $\mu\text{g}/\text{m}^3$ )
50	50	40	59	SO <sub>2</sub> ( $\mu\text{g}/\text{m}^3$ )
40	40	59	49	NO <sub>2</sub> ( $\mu\text{g}/\text{m}^3$ )
10	10	4	5.6	( 8) CO( $\mu\text{g}/\text{m}^3$ )

.2004 2001

:

(%) (2004-1990)

:(14)

2004	1990	
29.74	12.43	
14.06	1.56	
16.07	3.7	
14.19	3.98	
37.89	5.25	
20.82	5.83	
10.68	2.54	
11.79	3.41	
8.62	2.21	
9.06	2.07	
8.39	2.43	
18.9	5.85	



12.21	3.27	
14.22	6.16	
14.8	4.39	

.2003

2004

:

