

(1)

"

":

"

"

15

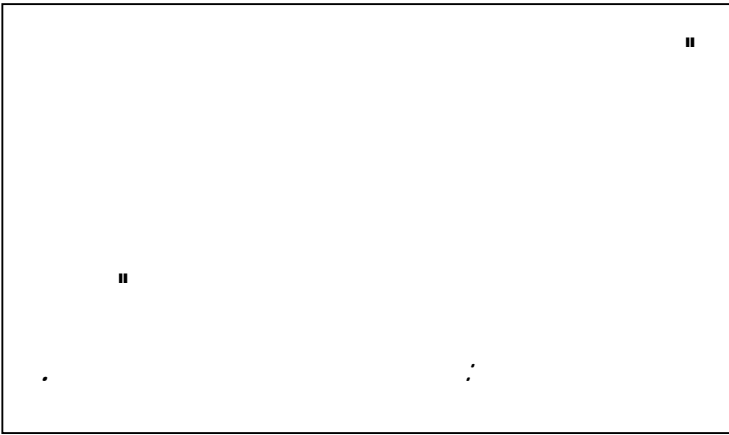
(

)

65

10





"

.

.

"

.

.

"

.

.

.

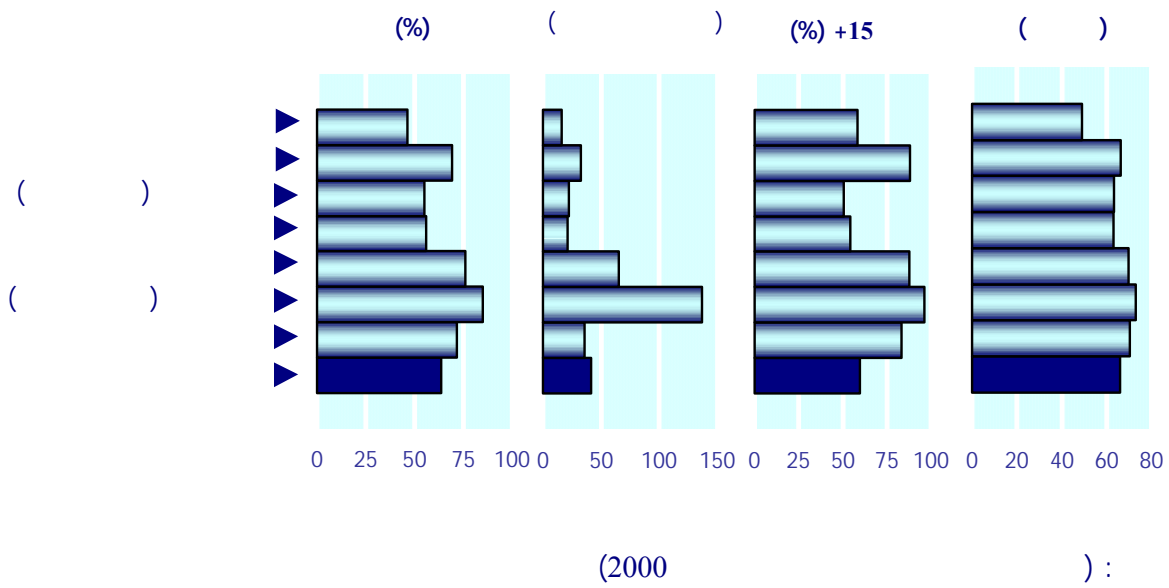
: (2)

(22)

(1)

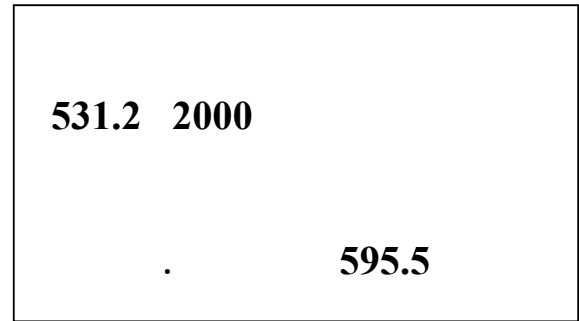
1

1998



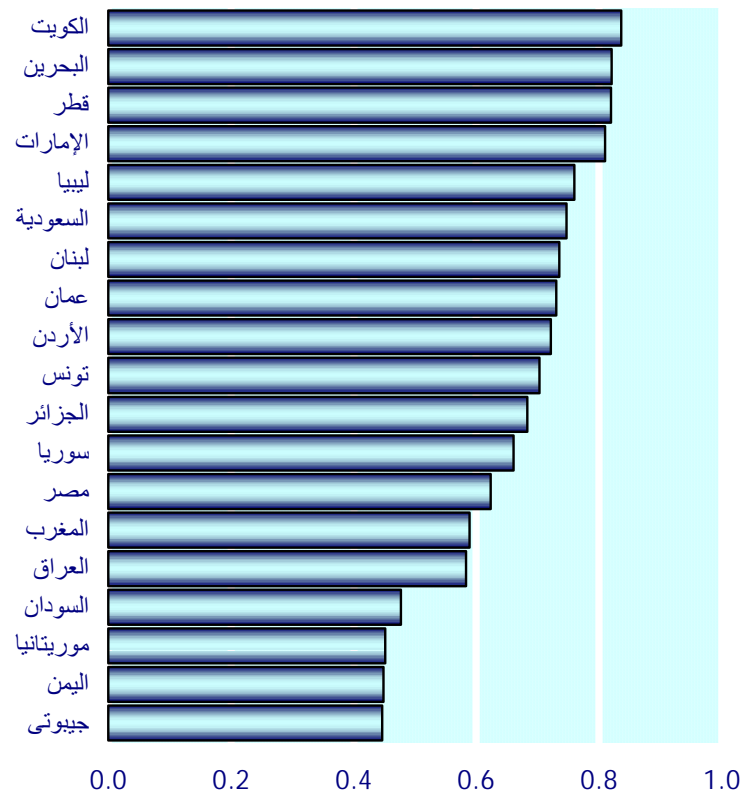
(2)

(2)



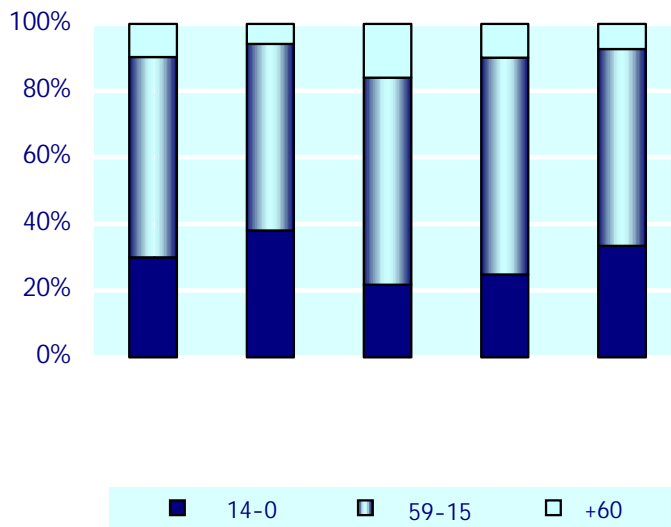
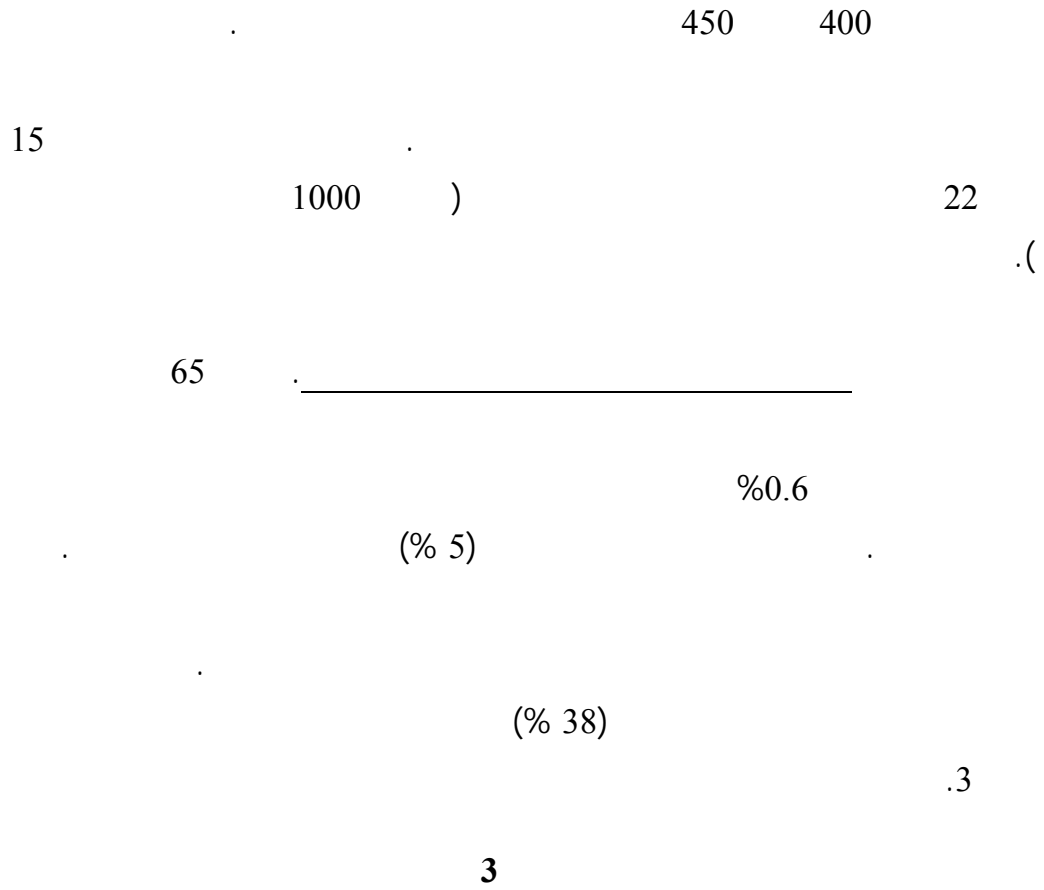
2

1998



(2000

):



(3)

1990

(1995)

111

174

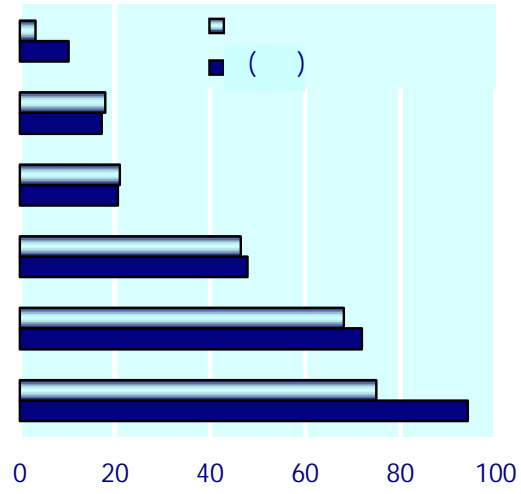
)

.(998

.(1)

1

()

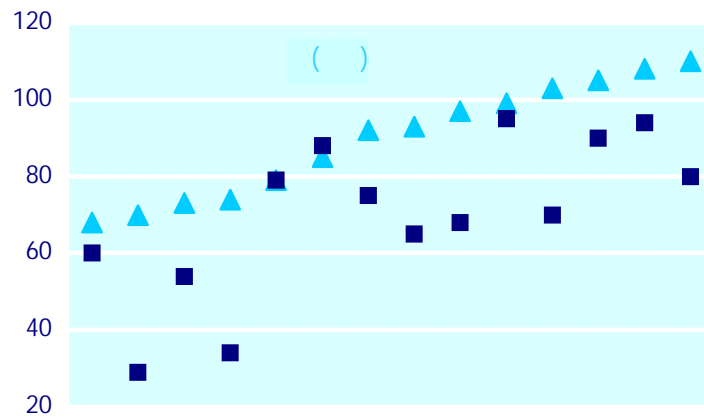


:(14)

.2

2

()



(4)

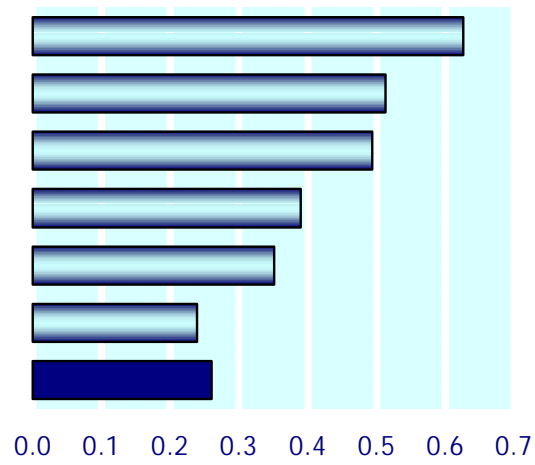
1970

1995

.(1)

1

1995



1995

) 1995

:

.(

2001

18
340

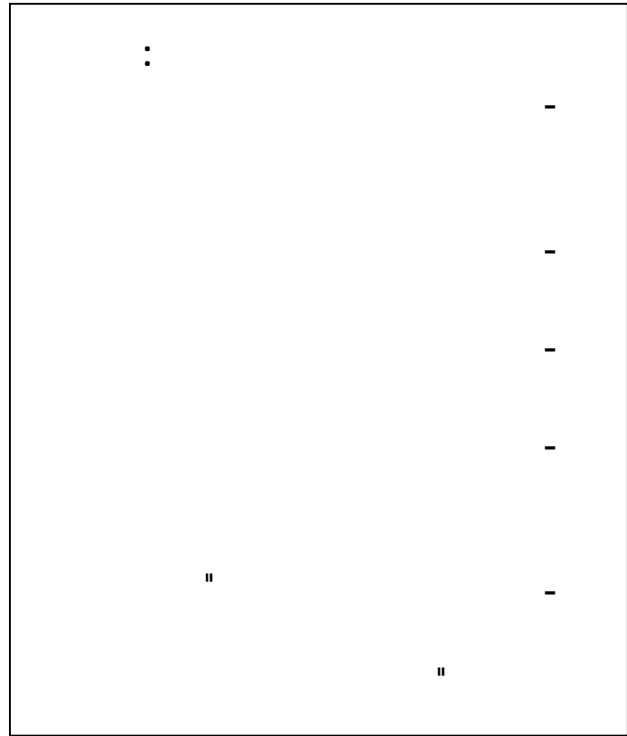
"

16

"

%2

15



2001 (1)

"

"

(5)

65

10

.1995

%10 1980 %20

(1)

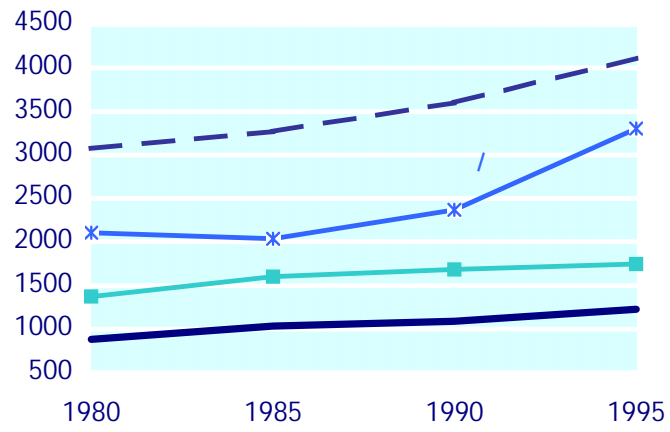
"

"

2002

1

1995-1980



(1998 1996) :

:

%0.2

.1995

%2.9

%1.26

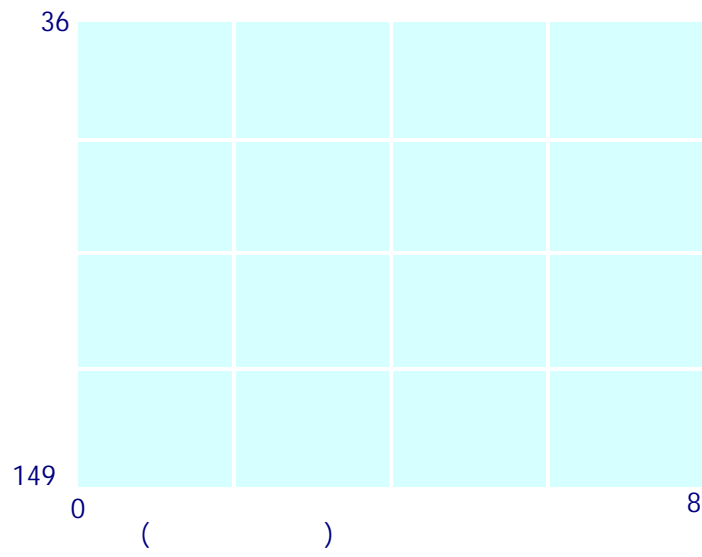
%1.2

. (2) .

2

1998

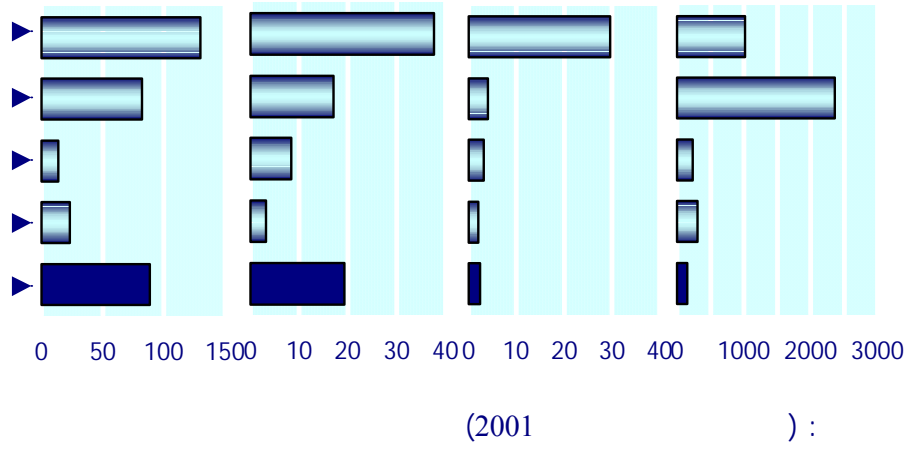
()



(2000

):

.(3)



1999

(6)

1999

531.2

.(595.5)

%5

1998

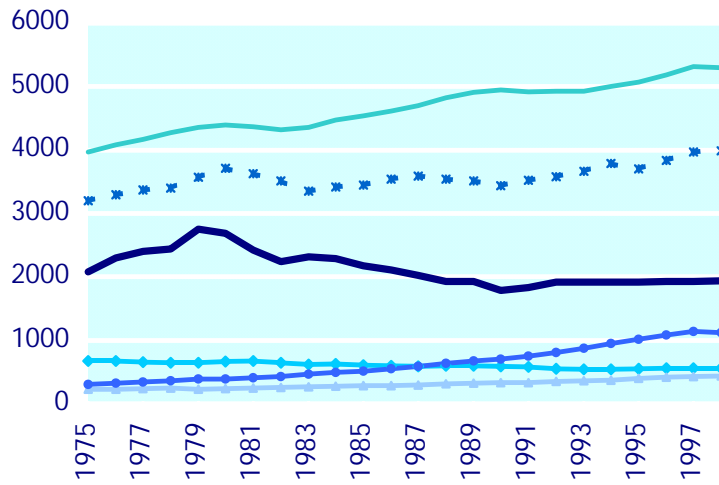
. %3.3

%13.9

(1)

1

1998-1975



%70

(2)

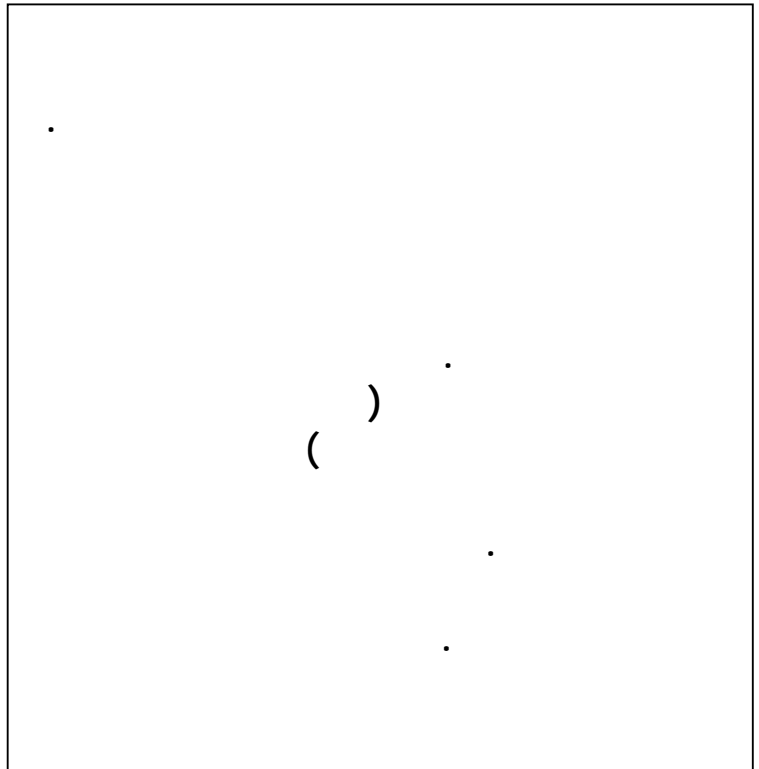
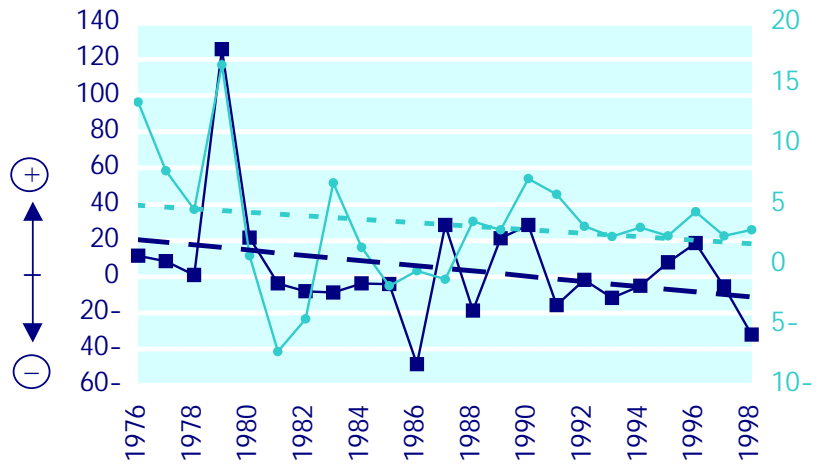
%.6

%1.5

%1

(1995)

1998-1976



.
%1

.
%2

."

."

.
.2001

/

(7)

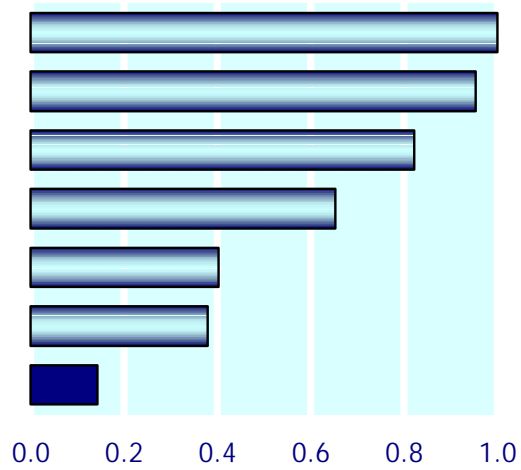
"
"
"

" "

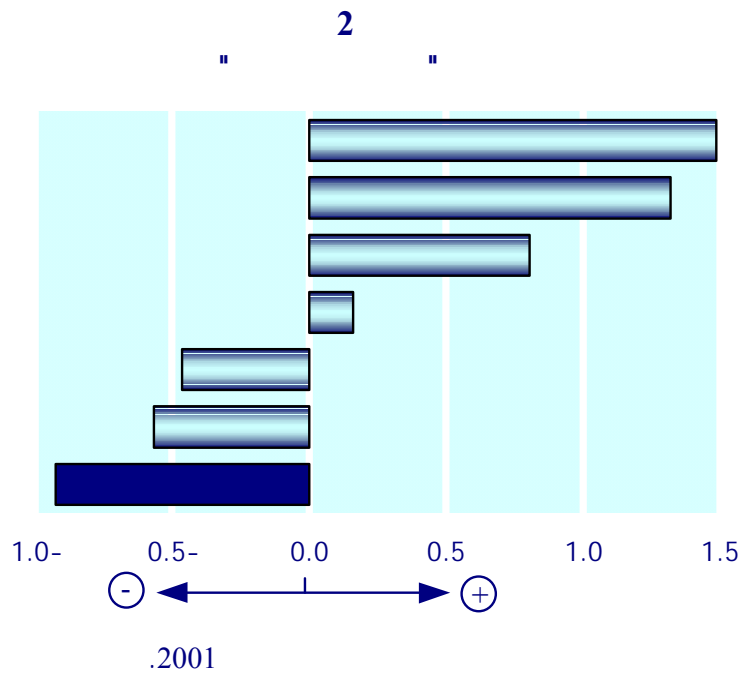
(2) (1)

1

1998

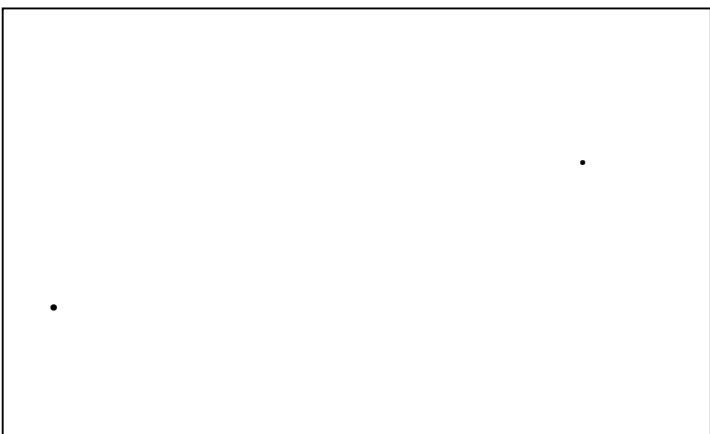


(1999) :



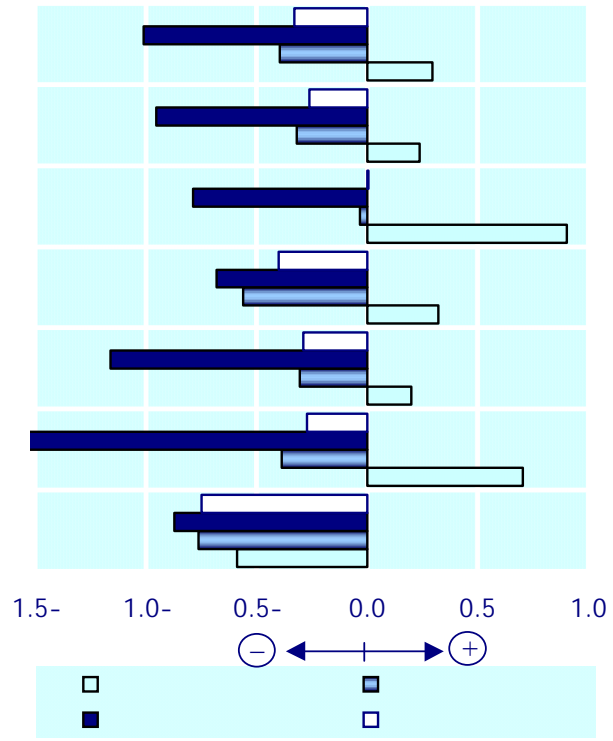
.(3)

%98,4



3

()



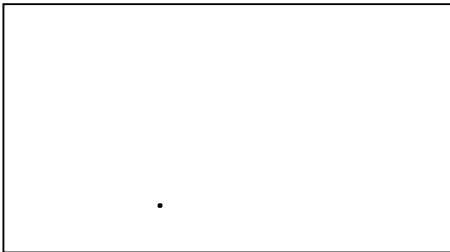
(1999)

:



: (8)

10 7



29